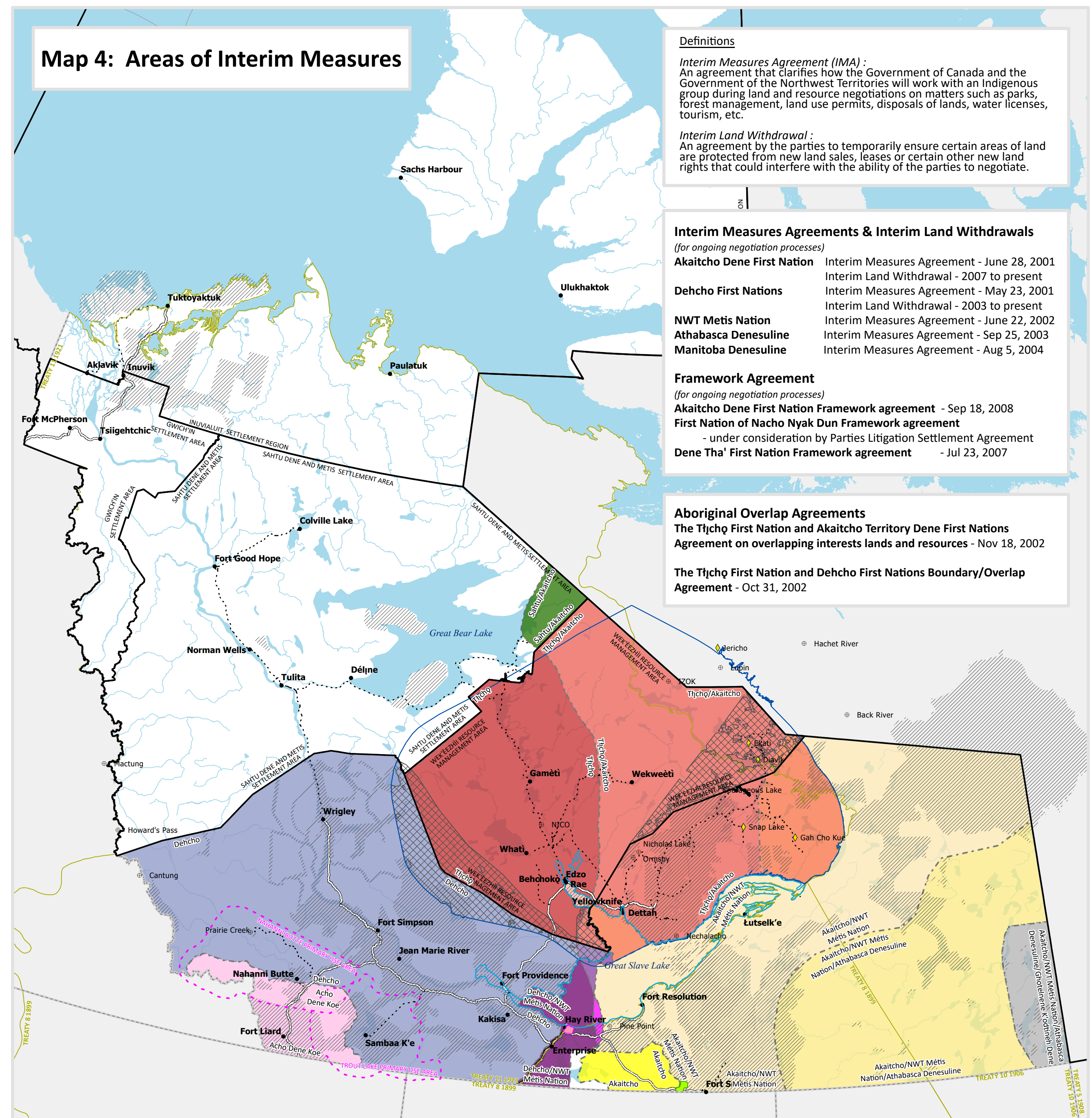
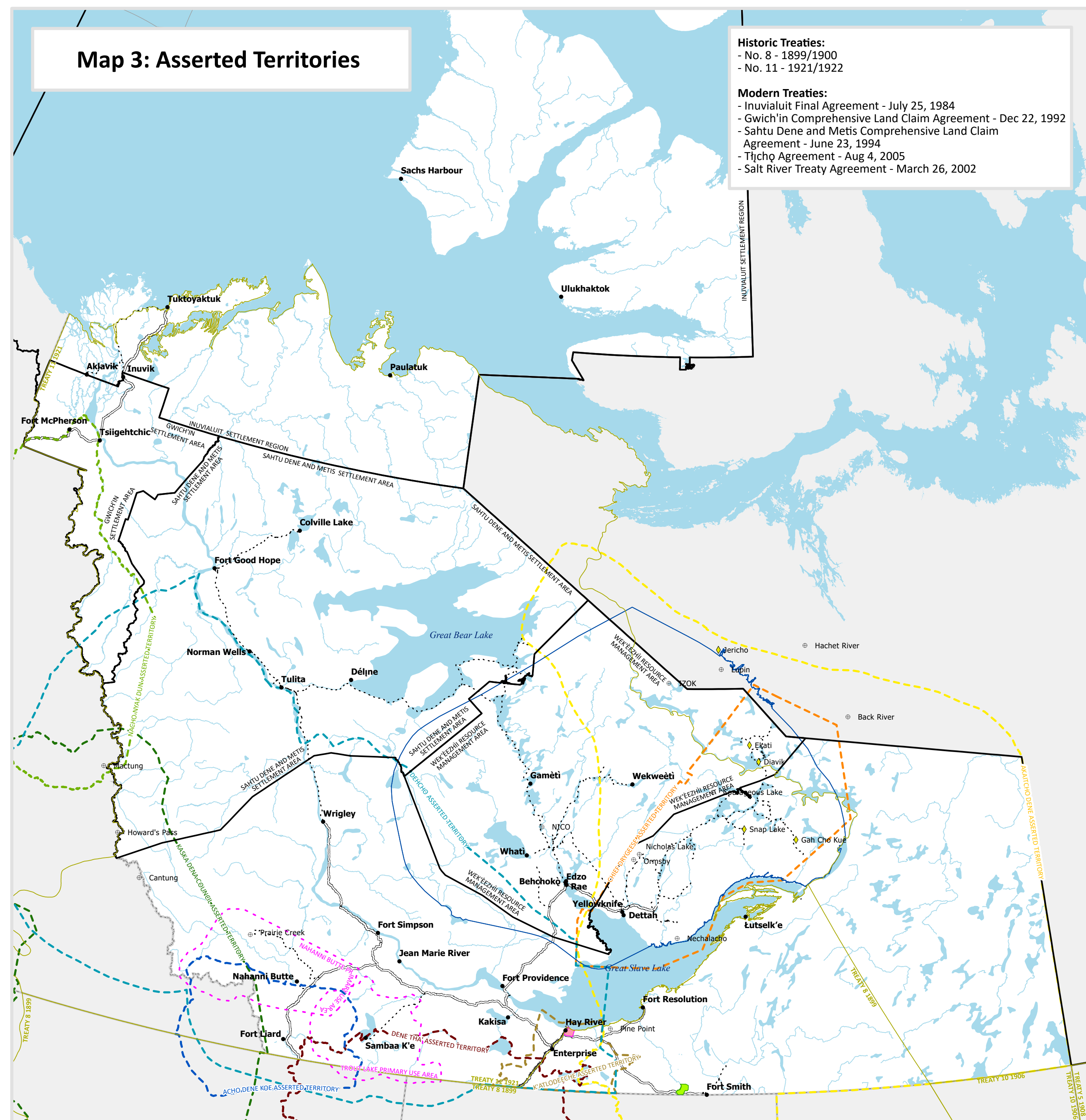
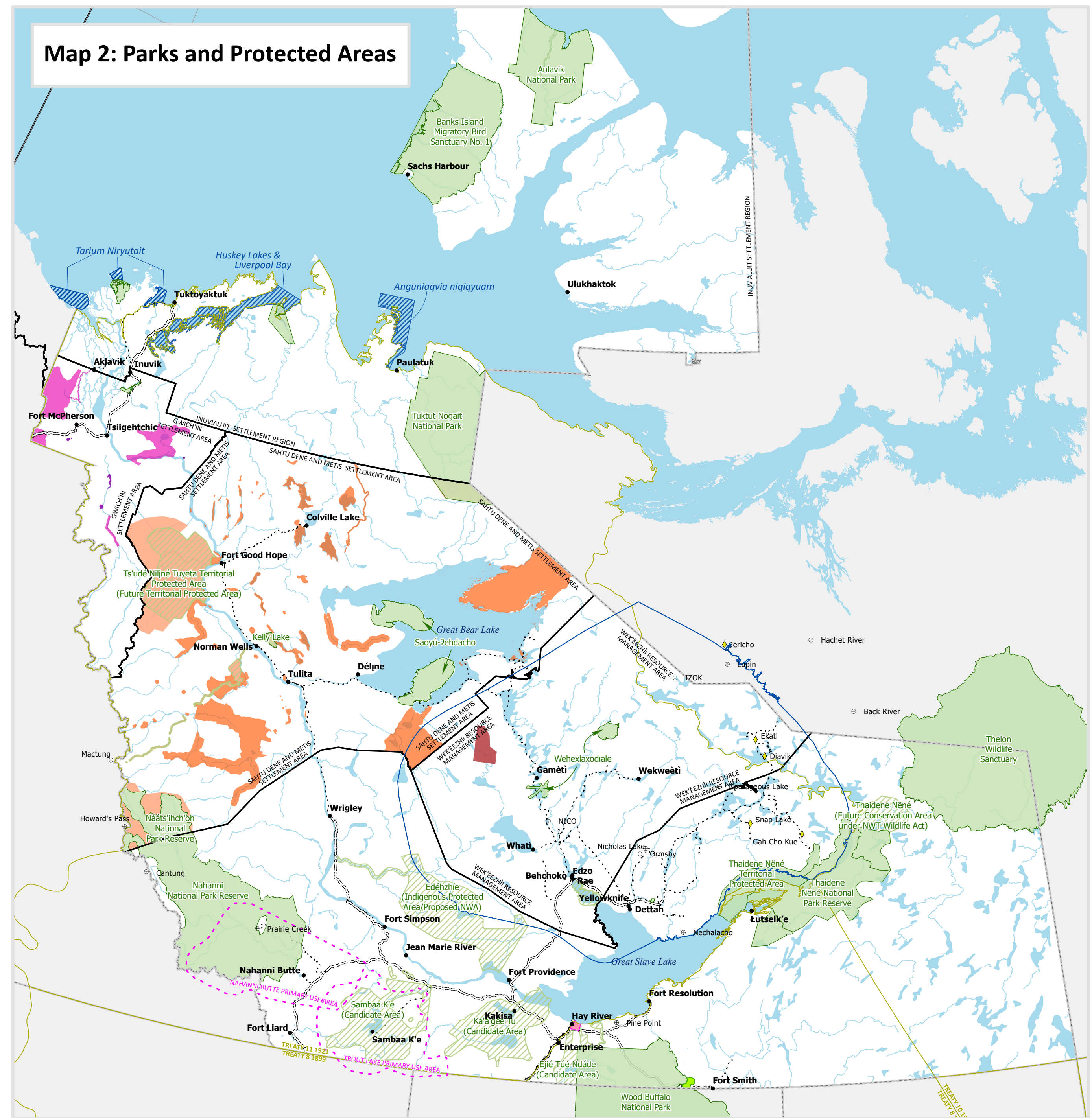
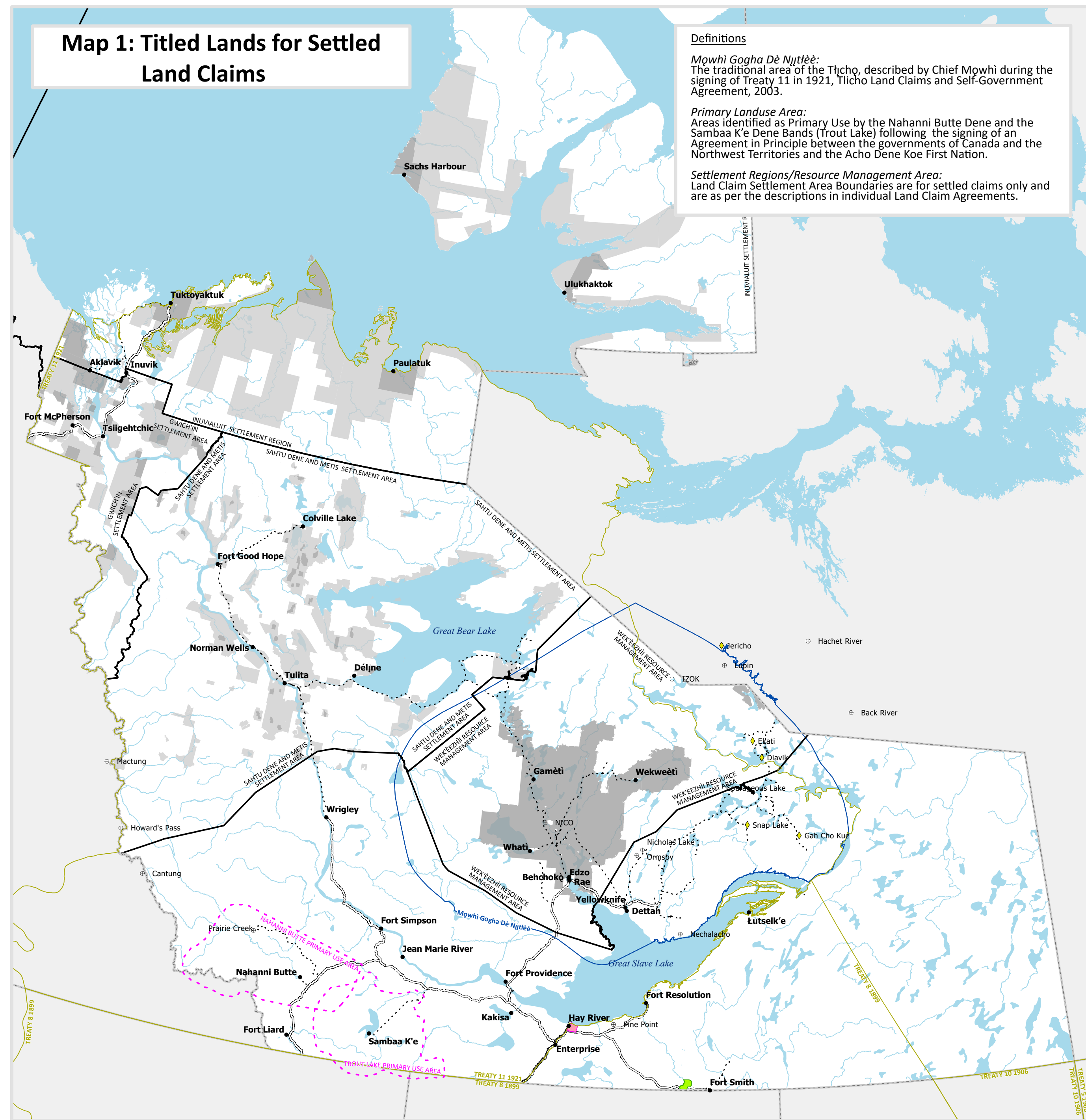


NWT land related to Indigenous groups



General Information

- Community
- Diamond Mine
- Metal Mine
- Mowhi Gogha Dè Njiltè
- Provincial or Territorial Boundary
- Primary Land Use Area
- Historic Treaties of Canada
- Settlement Region/Resource Management Area
- Hay River Dene No. 1
- Salt River First Nation Reserve Lands

Map 1¹

- Surface Rights Only
- Surface and Subsurface Rights

Map 2

Conservation Areas²

- Gwich'in Conservation Zone
- Gwich'in Heritage Conservation Zone
- Sahtu Conservation Zone
- Sahtu Proposed Conservation Initiative
- Ezodtli
- Marine Protected/Special Management Area³

Protected Areas²

- Protected Conservation Areas
- Candidate Protected Areas

Map 3

- Acho Dene Koe asserted territory⁴
- Akaitcho Dene asserted territory⁵
- Chief Drygese asserted territory (Yellowknives Dene First Nation)⁶
- Dehcho asserted territory⁷
- Dene Tha' asserted territory⁸
- K'atodechee asserted territory⁹
- Kaska Dena Council asserted territory⁹
- Nacho Nyak Dun asserted territory¹⁰

Map 4

- Overlap Agreement
- Land Withdrawal¹¹ NWT responsibility
- Great Slave Lake
- Acho Dene Koe⁴
- Dehcho First Nation (DFN)⁵
- DFN/Akaitcho Dene First Nation (ADFN)
- DFN/ADFN/NWT Metis Nation (NWTMN)
- DFN/NWTMN
- NWTMN¹
- Sahtu Dene and Metis Settlement Area/ADFN
- ADFN²
- ADFN/NWTMN
- ADFN/NWTMN/Athabasca Denesuline¹²
- ADFN/NWTMN/Athabasca Denesuline/ Ghotelene K'odtineh Dene¹³
- Tłı̄chǫ/ADFN
- Tłı̄chǫ/ADFN/NWTMN
- Tłı̄chǫ/NWTMN

Scale: 0 50 100 200 300 400 500 Kilometers
 1:4,500,000

Coordinate System: NAD 1983 CSRS Northwest Territories Lambert
 Datum: North American 1983 CGRS
 Projection: Lambert Conformal Conic
 Produced by: CIRNAC NT-Geomatics
 Printed on: March 3, 2021

This map may be used and reproduced for educational and informational purposes only. Any use for commercial purposes is prohibited and all rights are reserved.

This map includes: boundaries established by settled comprehensive land claims; areas under land, resources and/or self-government negotiations; areas asserted by Indigenous people as traditional territories; and other land information. Publication of this map does not imply that the Indigenous group, the Government of the Northwest Territories or the Government of Canada have agreed to any boundaries or areas shown except where legally established. This map is intended for general information only. It is neither a technical reference tool, nor a legal document. Crown-Indigenous Relations and Northern Affairs Canada (CIRNAC) will not be held liable for any errors or inaccuracies. To identify the specific location of any site with respect to any boundary, or to determine the consultation or other requirements that may exist in an area, please contact the Governance and Partnerships Directorate in Yellowknife at (867) 669-2617.